

**CONNECT AND PROTECT**

# Compact Adjustable Busbar Supports UL

Low Voltage Power And Grounding Connections

  
nvent

**ERIFLEX**

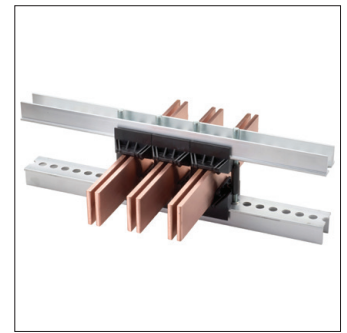
# Low Voltage Power And Grounding Connections

## COMPACT ADJUSTABLE BUSBAR SUPPORTS, UL

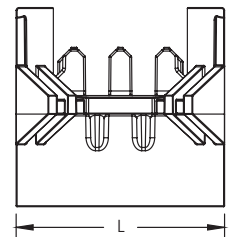
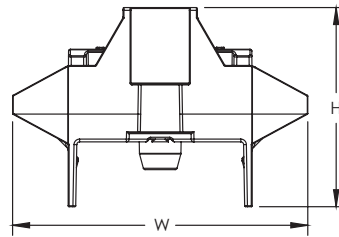
Compact Adjustable Busbar Support (CABS), UL is an innovative and easy adjustable mounting solution for busbar supports. It provides a professional and standardized solution, while emphasizing the flexibility for multiple design configurations and providing a template for busbar supports. Compact Adjustable Busbar Support (CABS), UL is a time and cost saving product with UL recognition.



- Modules provide flexibility to select distance between phases and supports
- Provides appropriate spacing between busbars in the same phase for cooling
- Pins align with holes on support rails to allow for incremental positioning
- Works with copper or aluminium busbar
- Installs quickly and easily
- Halogen free insulators
- RoHS Compliant



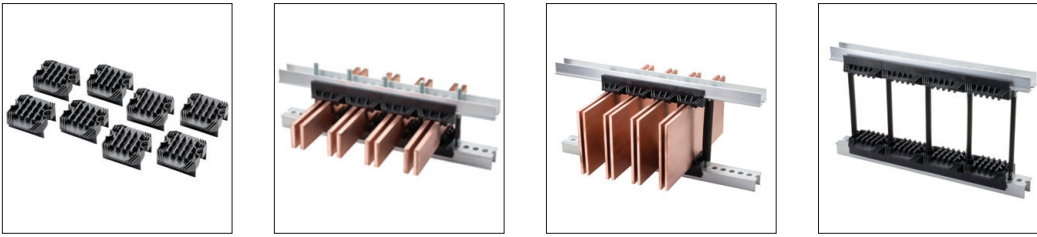
Material: Glass Fiber Reinforced Polyamide  
 Typical Application Current Rating: 400 - 4,500 A  
 Dielectric Strength, UL: 1,000 VAC, 1,500 VDC  
 Working Temperature: -40 to 266 °F  
 Complies With: IEC® 60439.1, IEC® 61439.1, IEC® 60695-2-12 (Glow Wire Test 960 °C)  
 Flammability Rating: UL® 94V - 0  
 RoHS Compliant  
 Recognized to UL 67 and CSA C22.2 No. 29



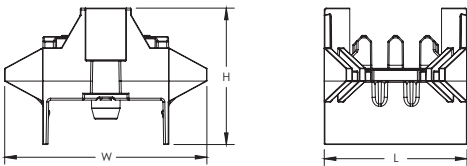
Part Number	CABS142T	CABS382T	CABS143T	CABS383T	CABS144T	CABS384T
Article Number	549500	549503	549501	549504	549502	549505
Busbars per Phase	1 - 2		1 - 3		1 - 4	
Busbar Width	2" - 6"					
Busbar Thickness	1/4"	3/8"	1/4"	3/8"	1/4"	3/8"
Height (H)	2.15"	1.96"	2.02"	1.96"	1.90"	1.96"
Length (L)	2 1/4"	3"	3 3/4"	3"	3 3/4"	4 1/4"
Width (W)	3.2"					
Unit Weight	0.95 lb	1.23 lb	1.54 lb	1.28 lb	1.61 lb	1.90 lb
Certification Details	UL® 67 (CSA C22.2 No. 29) for Panelboards, 600 V Max UL® 508A for Industrial Control Panels, 600 V Max UL® 508C for Power Conversion Equipment, 1000 V Max UL® 845 for Motor Control Centers, 600 V Max UL® 891 (CSA C22.2 No. 244) for Switchboards, 600 V Max UL® 1741 for Inverters, Converters and Interconnection System Equipment, 600 V Max					

Typical Application Rating is dependent upon busbar size, current rating, temperature, and enclosure size.

## CABS MODULE KIT WITH NEUTRAL, UL



- Modules provide flexibility to select distance between phases and supports
- Provides appropriate spacing between busbars in the same phase for cooling
- Pins align with holes on support rails to allow for incremental positioning
- Works with copper or aluminium busbar
- Installs quickly and easily
- Halogen free insulators
- RoHS Compliant



Material: Glass Fiber Reinforced Polyamide

Typical Application Current Rating: 400 - 4,500 A

Dielectric Strength, UL: 1,000 VAC, 1,500 VDC

Working Temperature: -40 to 266 °F

Complies With: IEC® 60439.1, IEC® 61439.1, IEC® 60695-2-12 (Glow Wire Test 960 °C)

Flammability Rating: UL® 94V - 0

RoHS Compliant

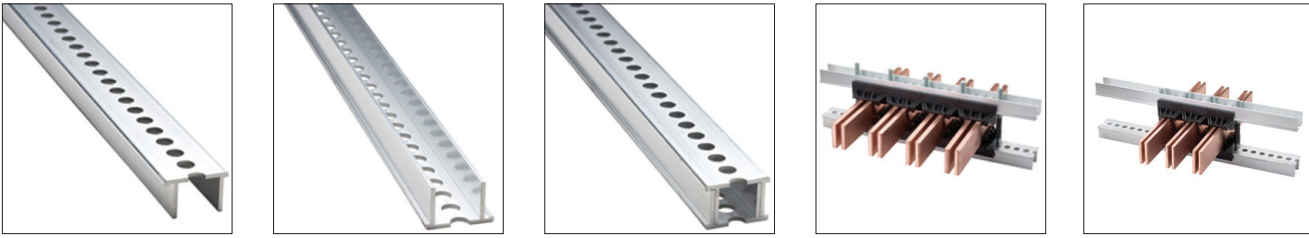
Recognized to UL 67 and CSA C22.2 No. 29



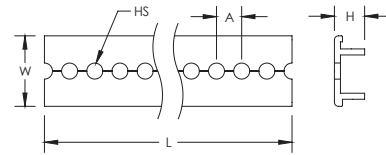
Part Number	CABS142TN	CABS382TN	CABS143TN	CABS383TN	CABS144TN	CABS384TN
Article Number	549506	549509	549507	549510	549508	549511
Busbars per Phase	1 - 2		1 - 3		1 - 4	
Busbar Width	2" - 6"					
Busbar Thickness	1/4"	3/8"	1/4"	3/8"	1/4"	3/8"
Height (H)	2.15"	1.96"	2.02"	1.96"	1.90"	1.96"
Length (L)	2 1/4"	3"	3 3/4"	3"	3 3/4"	4 1/4"
Width (W)	3.2"					
Unit Weight	1.26 lb	1.63 lb	2.05 lb	1.72 lb	2.14 lb	2.54 lb
Certification Details	UL® 67 (CSA C22.2 No. 29) for Panelboards, 600 V Max UL® 508A for Industrial Control Panels, 600 V Max UL® 508C for Power Conversion Equipment, 1000 V Max UL® 845 for Motor Control Centers, 600 V Max UL® 891 (CSA C22.2 No. 244) for Switchboards, 600 V Max UL® 1741 for Inverters, Converters and Interconnection System Equipment, 600 V Max					

Typical Application Rating is dependent upon busbar size, current rating, temperature, and enclosure size.

## CABS ALUMINIUM PROFILE, UL



- For use with CABS module kits, UL
- Available in multiple lengths to accommodate various widths and depths of enclosures
- Factory punched holes for quick assembly
- Evenly spaced holes provide consistent and accurate spacing
- Improve bending resistance by interlocking or stacking two profiles
- Time-savings and lower total install costs compared to traditional methods
- Engineered and standardized design
- RoHS Compliant

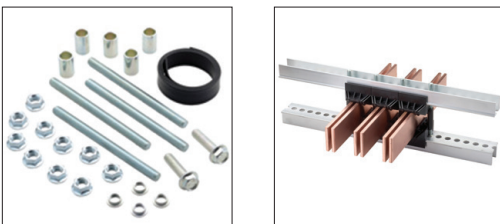


Material: Aluminum  
Finish: Anodized



Part Number	Article Number	Length L	Height H	Width W	Hole Size HS	A	Unit Weight
CABSAL18	549512	18"	1.15"	1.8"	0.47"	3/4"	1.52 lb
CABSAL24	549513	24"	1.15"	1.8"	0.47"	3/4"	2.03 lb
CABSAL30	549514	30"	1.15"	1.8"	0.47"	3/4"	2.54 lb
CABSAL36	549515	36"	1.15"	1.8"	0.47"	3/4"	3.04 lb
CABSAL48	549516	48"	1.15"	1.8"	0.47"	3/4"	4.06 lb
CABSAL54	549517	54"	1.15"	1.8"	0.47"	3/4"	4.56 lb

## CABS HARDWARE KIT, UL



- Kit includes 4 threaded rods, 4 inserts, 2 screws, 10 nuts, 6 spacers and sleeve
- Multiple rod lengths available to accommodate various busbar widths and profile configurations
- Threaded rods are made from non-magnetic stainless steel to reduce the magnetic loop between phases
- Insulator sleeves allow for minimal space between phases
- Robust hardware provides strength and rigidity
- Installs quickly and easily
- Time-savings and lower total install costs compared to traditional methods
- Engineered and standardized design
- RoHS Compliant

Material: Stainless Steel 316 (EN 1.4401), Steel, Polyolefin  
Finish: Electrogalvanized

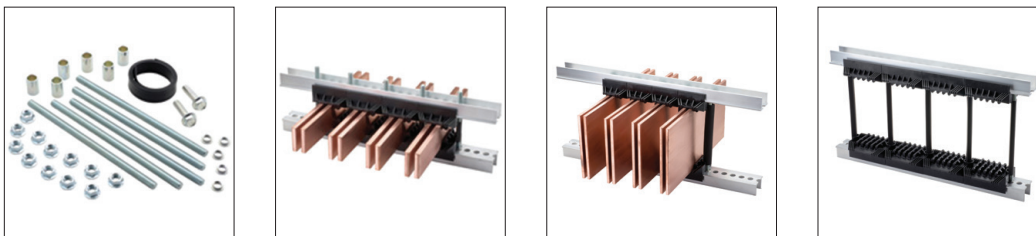


Part Number	Article Number	Rod Length	Thread Size	Unit Weight
CABS140HWT	549526	5.51"	M10	0.60 lb
CABS190HWT	549527	7.48"	M10	0.66 lb
CABS220HWT	549528	8.66"	M10	0.67 lb

Busbar Width	Single Profile Support	Double Profile Support
2"	CABS140HWT	CABS140HWT
2 1/2"	CABS140HWT	CABS190HWT
3"	CABS140HWT	CABS190HWT
4"	CABS190HWT	CABS190HWT
5"	CABS190HWT	CABS220HWT
6"	CABS220HWT	CABS220HWT

Threaded rods must be installed on both sides of each phase.

### CABS WITH NEUTRAL HARDWARE KIT, UL



- Kit includes 5 threaded rods, 5 inserts, 2 screws, 12 nuts, 7 spacers and sleeve
- Multiple rod lengths available to accommodate various busbar widths and profile configurations
- Threaded rods are made from non-magnetic stainless steel to reduce the magnetic loop between phases
- Insulator sleeves allow for minimal space between phases
- Robust hardware provides strength and rigidity
- Installs quickly and easily
- Time-savings and lower total install costs compared to traditional methods
- Engineered and standardized design
- RoHS Compliant

Material: Stainless Steel 316 (EN 1.4401), Steel, Polyolefin  
Finish: Electrogalvanized

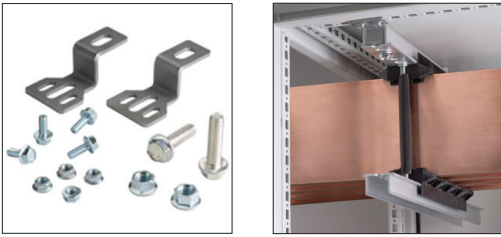


Part Number	Article Number	Rod Length	Thread Size	Unit Weight
CABS140HWTN	549529	5.51"	M10	0.75 lb
CABS190HWTN	549530	7.48"	M10	0.82 lb
CABS220HWTN	549531	8.66"	M10	0.91 lb

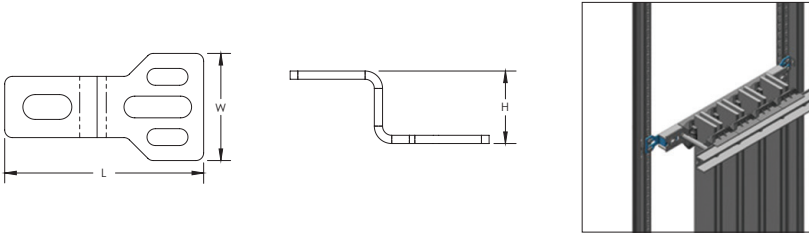
Busbar Width	Single Profile Support	Double Profile Support
2"	CABS140HWT	CABS140HWT
2 1/2"	CABS140HWT	CABS190HWT
3"	CABS140HWT	CABS190HWT
4"	CABS190HWT	CABS190HWT
5"	CABS190HWT	CABS220HWT
6"	CABS220HWT	CABS220HWT

Threaded rods must be installed on both sides of each phase.

## CABS BRACKET KIT E, UL



- Quickly and easily installs on aluminum profile and enclosure structure
- Slotted holes in bracket allow for easy installation adjustments
- Time-savings and lower total install costs compared to traditional methods
- Engineered and standardized design
- RoHS Compliant



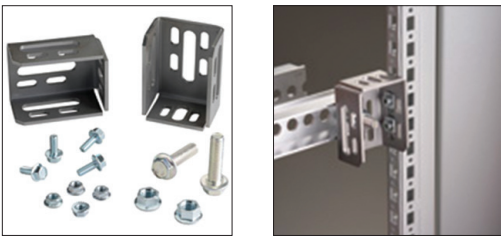
Material: Steel  
Finish: Electrogalvanized



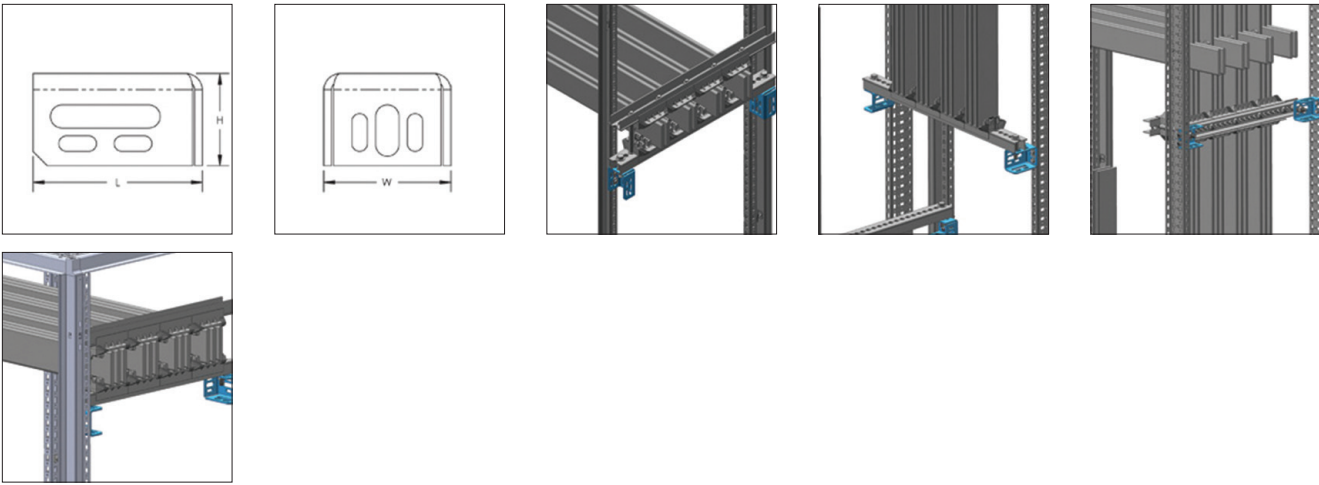
Part Number	Article Number	Height H	Length L	Width W	Unit Weight
CABSBRKTKITE	549520	1.2"	3 1/4"	1 3/4"	0.27 lb

Brackets must be installed in pairs.

## CABS M BRACKET, UL



- Quickly and easily installs on aluminum profile and enclosure structure
- Slotted holes in bracket allow for easy installation adjustments
- Can be used with Hoffman PROLINE G2 front load BV-M6 fastener
- Time-savings and lower total install costs compared to traditional methods
- Engineered and standardized design
- RoHS Compliant



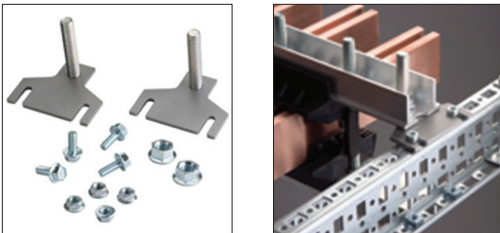
Material: Steel  
Finish: Electrogalvanized



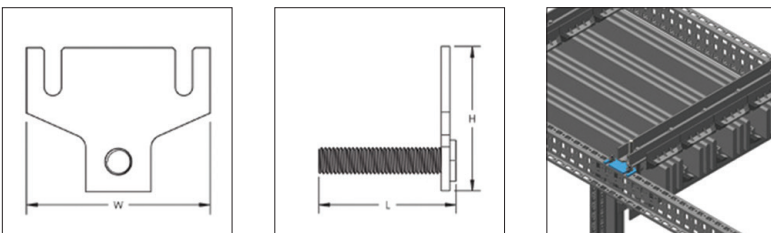
Part Number	Article Number	Height H	Length L	Width W	Unit Weight
CABSRKTKITM	549518	1.65"	3"	2 1/4"	1.32 lb

Brackets must be installed in pairs.

### CABS T BRACKET, UL



- Quickly and easily installs on aluminum profile and enclosure structure
- Slotted holes in bracket allow for easy installation adjustments
- Time-savings and lower total install costs compared to traditional methods
- Engineered and standardized design
- RoHS Compliant



Material: Steel  
Finish: Electrogalvanized



Part Number	Article Number	Height H	Length L	Width W	Unit Weight
CABSRKTKITT	549519	2.17"	2.06"	2.76"	0.25 lb

Brackets must be installed in pairs.